

CROMWELL COMMUNITY COLLEGE



SIXTH FORM SUBJECT CHOICES SEPTEMBER 2012

Subject Choices 2011 - 2012

Introduction

Welcome to Cromwell Community College Sixth Form. The progression from GCSE to Advanced Level is sometimes difficult for some students because of the increased complexity of the courses. Here at Cromwell, we have a caring and experienced team of Sixth Form Staff and tutors to ease that transition, and also help with the next big step into Higher Education or a career. I am delighted that you are considering Cromwell Community College for your Post 16 education. The decision you are about to make is the most important decision you have made to date. It is vital you gain as much information, guidance and advice as possible to ensure you make the right decision for you. Future students will benefit from the opening of our brand new Post 16 centre; this will include a large common room, Private study classrooms and a state of the art IT room exclusively for Post 16 students. Exciting times for the future of Cromwell Sixth Form.

Being part of Cromwell Sixth Form is not just about studying to do well in academic subjects however; it is also about developing as a whole person, increasing and improving skills, with experiences in with other areas.

As a senior pupil in school a great deal is expected of you. Life in the Sixth Form is not simply a continuation of Year 11. The style of teaching mode of study and the responsibilities of being a Sixth Former are very different. You will be expected to set the right example.

Here at Cromwell we strive to challenge, stretch, encourage and educate in a friendly and caring environment; and, no matter which courses are studied we have high expectations of all our students.

I wish you luck in your upcoming exams and look forward to receiving your application.

Mr J. Varey
Director of Post 16 studies

Sixth Form Courses

Traditional A Level Course

Year 12 students taking a two-year A level course take four subjects, as well as aiming for an Extended Project Qualification which leads to an AS qualification. Progress will be reviewed regularly and there will be examinations at the end of the first year of the course. Progression into Year 13 will depend on satisfactory progress during the first year of the course. Year 13 students continue with three or four subjects, including at least two at A-level.

Pathway Alternate A Level Course

Year 12 students taking a two-year A level course take three subjects, as well as aiming for an Extended Project Qualification which leads to an AS qualification. Progress will be reviewed regularly and there will be examinations at the end of the first year of the course. Progression into Year 13 will depend on satisfactory progress during the first year of the course. Year 13 students continue with three, including at least two at A-level.

Foundation Course

The one-year Foundation course a Vocational Qualification and possibly One AS level course. AS Extended Project Qualification and tutorial programme. A minimum contact time is set. Progress will be monitored regularly.

Subject changes

All changes **must be before end of September**. Students must first discuss problems with form tutors and subject staff (forms from Kim Fisher). They should then see the Director of Post 16 Studies and Assistant Principal to drop to look at possible alternatives. (NB some groups may be full). Students must speak to their parents in the presence of the Director of Post 16 Studies. A subject change form must be completed. All changes to timetable must be made through the Director of Post 16 Studies.

Examination withdrawals

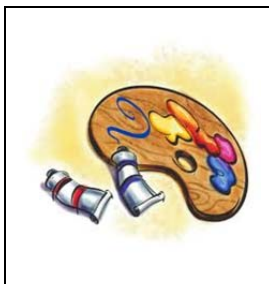
Students must see the Director of Post 16 Studies before approaching the Examinations Officer. Late withdrawals will incur charges, as payments for entry to examinations will have been made.

Leaving mid-course

Students must see the Director of Post 16 Studies. We will not try and force students to stay, but we will want to discuss the pros and cons with them, and help to ensure that they are making the right decision. They will have to phone their parents and discuss these matters with them. A leaver's form must be completed before leaving the college.

Subjects at Cromwell Community College

- Art and Design Page 5
- Beauty Therapy Page 6
- Biology Page 7
- Chemistry Page 8
- English Literature Page 9
- Geography Page 10
- Government & Politics Page 11
- Health & Social Care Page 12
- History Page 13
- ICT Page 14
- Mathematics Page 15
- Product Design Page 16
- Psychology Page 17
- Public Services Page 18
- Religious Studies Page 19
- BTEC Sports Page 20
- Sports Studies Page 21
- Textiles Page 22



Art and Design

Introduction

The GCE course in Art and Design offers a wide range of creative disciplines to students who desire flexibility and choice in their Post 16 studies. The new streamlined specification and revised four unit structure allows students to develop their work sequentially with less emphasis on a modular assessment.

Course Content

The course now has a simplified assessment grid which extends and clarifies the qualification while learning objectives remain at the centre of student progression. The updated GCE enables students to develop both a creative and stimulating personal response within one or more endorsed titles. It is possible for students to complete these at both levels. This course offers students the chance to extend their studies in art and design beyond GCSE, through the media and practice of a chosen endorsement. A candidate choosing Fine Art would then work predominantly with this for each unit of work, while a candidate opting for Photography or 3D Design will follow that particular route. There is a reasonable level of flexibility and many areas of visual language are common to all disciplines, so students are able to explore a variety of responses, using their chosen materials and techniques. Drawing skills still underpin this subject and students are expected to explore mark-making and develop a confident use of visual language at AS.

Additional Information

An important aspect of the AS&A2 study is planned visits to galleries and museums. Art students record information to broaden their own visual language skills and understanding. Visits are arranged by the Art Department but these are supplemented with personal visits and further research. The course is designed to allow students creative ownership and encourage freedom to explore unfamiliar materials, techniques and processes. This subject offers students the opportunity to produce independent creative solutions and strengthen their understanding. Advanced level experience in Art and Design is a beneficial experience for all students who wish to pursue a career in art, or follow an art based college and university courses.

You could take this course with other advanced level courses such as History of Art to prepare for higher education in areas of art and design, photography, architecture or more general higher education courses. With further training, you could go into a job related to art and design such as an Architect, Interior or Fashion Designer. The course will also encourage you to explore your creative mind and help you develop the basic skills, understanding and knowledge that many employers across lots of industries are looking for.

For Further Information, please contact:

Mrs M Andrews



Beauty Therapy

Introduction

Level 2 NVQ Diploma in Beauty Therapy

Everyone loves to be pampered, and this course will ensure that you can deliver the latest treatments and services to your customers confidently, safely and professionally. The course will provide you with knowledge on the underlying principles of small beauty therapy treatments and the practical skills required to carry out these treatments.

Course Content

On the course you will learn to ensure responsibility for action to reduce risks to health and safety, develop and maintain effectiveness at work, promote additional products or services to customers, provide facial skincare, manicures & pedicures and eye treatments that include eyebrows/lashes. You will also study waxing services. Two additional units, make-up and reception, will contribute to a total of 9 credits.

Additional Information

Students completing these courses gain employment in the beauty industry in a huge variety of situations including holiday resorts overseas, cruise ships, spas, salons and retreats. Some choose to set up their own business, and others pursue a career in the film, theatre, TV, media and photographic industries.

For Further Information, please contact:

Mrs S Morton



Biology

Introduction

This A level will help you to develop knowledge and understanding of biological facts, concepts and principles, together with an appreciation of their significance in new and changing situations. It will promote an appreciation of the importance of experimental and investigatory work in the study of biology and develop an understanding of the link between theory and experiment and of scientific methods.

Course Content

The course offers a broad coverage of Biological processes in both plants and animals along with detailed investigation into more cutting edge areas such as the use of stem cells and forensic science. The course consists of 3 units in AS and 3 in A2.

In AS both Units 1 and 2 assessed through written examination of 1 hour 15 minutes, each constituting 40% towards the AS. Unit 3 is internally marked and then moderated by Edexcel; this constitutes 20% towards the AS.

In A2 both Units 4 and 5 are assessed through written examination of 1 hour 30 minutes, each constituting 20% towards the entire A-Level. Unit 6 is internally marked and then moderated by Edexcel; this constitutes 10% towards the entire A-Level.

Additional Information

You could take this course to complement other advanced level courses that may overlap with Biology or to prepare for the A2 part of an Advanced GCE in Biology, which could lead onto higher education in science related subjects or more general higher education courses. With further training, you could go into a job related to Biology such as a Doctor, Nurse, Science Technician or Marine Biologist. You could also go straight into a job as the AS GCE is a recognised qualification that will help you to develop the basic skills, understanding and knowledge that many employers across lots of industries are looking for.

For Further Information, please contact:

Mr P ward and Dr M Pearson



Chemistry

Introduction

Chemistry is the study of substances, what they are made of, how they interact and what role they play in the environment and life around us. The AS course gives an foundation in chemistry with the study of atoms, molecules and the periodic table and an introduction into organic chemistry and the energetics of chemical reactions. Chemistry is a practical subject, and students will be trained in developing their practical skills through hands-on experiments within lessons. Students with a good foundation in maths will enjoy and benefit from this course.

Course Content

At AS Level candidates are given a solid grounding in foundation Chemistry. The specification introduces the chemical reactivity of atoms and molecules and provides an understanding of their structures. The development and use of periodic table is explained. The introduction of Practical Skills Assignments (PSA) into the specification allows teachers to credit candidates for work done in routine class practical's. Assessment becomes linked to the work of the course, and moves away from formulaic testing:

- Unit 1: Foundation Chemistry
- Unit 2: Chemistry in Action
- Unit 3: Investigative and Practical Skills - Internal Assessment.

At A2 Level the specification develops the concepts of physical chemistry introduced at AS. Candidates study kinetics, equilibria, organic chemistry and spectroscopic techniques to determine the molecular formulae and structures of organic compounds. Candidates continue to be assessed through PSA, gaining credit for work done in routine class practical's:

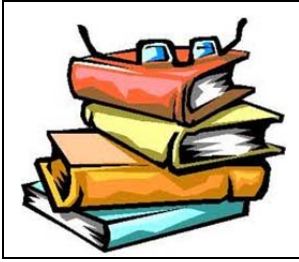
- Unit 4: Kinetics, Equilibria and Organic Chemistry
- Unit 5: Energetics, Redox and Inorganic Chemistry
- Unit 6: Investigative and Practical Skills - Internal Assessment.

Additional Information

Practical skills will be assessed throughout the year by your teacher and in the form of a formal Individual Skills Assessment. You will sit 2 formal exams in June and will be closely monitored throughout the year with an expectation of 2 homework assignments per week and 2-3 hours of independent home study. The possibilities for the student with qualifications in Chemistry are extensive, ranging from the more obvious career paths in disciplines such as Medicine, Pharmacy, Research and the Pharmaceutical Industry to the less obvious in areas such as Maths, Business and Law. An AS/A2 in Chemistry may also provide the opportunity for direct employment with local or national industries

For Further Information, please contact

Mrs C Gribble



English Literature

Introduction

Do you enjoy reading? Are you willing to learn to write in new and demanding ways? Are you happy to contribute to discussions and listen to other people's ideas? Can you work independently?

If you can say yes to all of these then A level English Literature is for you. An A level in English Literature is highly regarded by universities and by employers. It will teach you to read with great skill, to write accurately and to speak clearly, you will discover much about the world and some of the great minds that have gone before you.

Course Content

At AS, Unit 1 introduces candidates to the central position of narrative in the way in which literary texts work, involving many different aspects of literary representation. Unit 2 introduces candidates to aspects of genre. For the first three years of the specification tragedy is the dramatic genre to be studied:

- Unit 1: Aspects of Narrative – including 'Birdsong', 'Dubliners' and poetry by Hardy and Auden;
- Unit 2: Dramatic Genres – including 'Hamlet' and the work of Arthur Miller.

At A2, Unit 3 teaches candidates to develop ideas on the significance of genre. Texts are grouped within the categories: Elements of the Gothic and Elements of the Pastoral. In Unit 4, Candidates study a wide range of texts, the different ways of reading texts and critical ideas applied with discrimination to literary texts:

- Unit 3: Texts and Genres – including 'As You Like It', 'Tess of the D'Urbervilles' and modern poetry;
- Unit 4: Further and Independent Reading – students choose their own texts for individual study.

Additional Informational

You could take this course with other advanced level courses or equivalent to prepare for higher education in English studies or more general higher education courses. With further training, you could go into a job related to English Literature such as a Teacher, Journalist, Author or Poet. The course will also help you develop the skills, understanding and knowledge that many employers across lots of industries are looking for.

For Further Information, please contact:

Miss L Garlick, Mr R Partridge and Mr D King



Geography

Introduction

Geography is a subject that examines the actions of people and develops an understanding and appreciation of our physical environment. Geography also helps us to question our attitudes and values and encourages individuals to strive to reduce inequalities in the world. The course explores the key concepts and processes that explain geographical phenomena and landscapes. It maintains a balance between physical and human geography whilst ensuring relevance to the modern world. Students are asked to examine their responsibilities as global citizens and recognise that they too can play an important part in sustainable development.

Course Content

The specification provides coverage of physical, environmental and human aspects of Geography and the synoptic linkages between all of the units are crucial to develop a higher level of understanding. There will also be opportunities for fieldwork.

Managing Physical Environments

River environments: How rivers shape the land, how we can use and manage them sustainably. Coastal environments:

How the sea shapes the land, how we can use and manage the coastal environment sustainably. Cold environments:

What factors give cold environments their distinctive characteristics, why they are considered fragile and how we can manage them sustainably? Hot arid and semi-arid environments: What factors give hot and semi-arid environments their distinctive characteristics, why they are considered fragile and how we can manage them sustainably

Managing Change in Human Environments

Managing urban change - the dynamic nature of towns and cities. The issues associated with urban growth and decline.

Managing rural change - the changing countryside, the problems and benefits of rural living. The energy issue - how to balance supply and demand. The issues associated with our use of energy. The growth of tourism - the impacts, good and bad, of tourism and the way these can be managed.

Additional Information

You could take this course with other advanced level courses to prepare for higher education in geography, other areas of humanities, science or more general higher education courses. With further training, you could go into a job related to geography such as a Town Planner, Environmental Officer or Weather Forecaster. The course also helps you to develop the basic skills, understanding and knowledge that many employers across lots of industries are looking for.

For Further Information, please contact:

Mr A Kennedy



Government & Politics

Introduction

Anyone interested in people, their interests and concerns. How society is organised and the issues which face it. Government and Politics is of considerable general interest. It is particularly appropriate for anybody considering an occupation dealing with people, the law or administration in both the private and public sectors.

Course Content

What will I study?

- How communication between the Government and People is established and maintained
- The effectiveness of major institutions
- UK Political Issues e.g. Law and Order, Welfare, Northern Ireland
- European Issues and Concerns

At **AS**; two externally assessed exams of 1 hour 20 minutes duration each

- People and Politics
- Governing the UK

At **A2**; two externally assessed exams of 1 hour and 30minutes

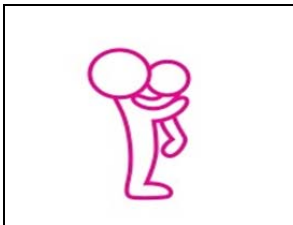
- UK Political Issues
- European Issues

Additional Information

Any other subjects of your choice would go with Government and Politics. The study of decision making processes and key political issues relates well to all areas of the Post 16 Curriculum.

For Further Information, please contact:

Mr E Adigun-Harris



Health & Social Care

Introduction

Those studying in preparation for employment in the health, social care and early years sector particularly in job roles where they will be expected to use their understanding of health and care principles and values and how they are used, communicate effectively with individuals and provide active support and the operations, activities and functions of care settings. This qualification will be suitable for those wishing to gain a specialist endorsement in either health social care or early years care and education. This qualification is also suitable for those wishing to gain a Level 3 qualification to support further study in FE and HE and provides a progression route to the OCR Level 3 National Extended Diploma in Health, Social Care and Early Years.

Course Content

Qualification structure To achieve this qualification, candidates must complete a total of **12** units consisting of four mandatory units and eight optional units. All units are centre-assessed and externally moderated by OCR. There are no timetabled exams for this qualification. The full award and units from this qualification are graded as Pass, Merit or Distinction. Students can choose to gain a qualification in a specialist pathway; Health, Social Care or Early Years and Education.

The mandatory units are:

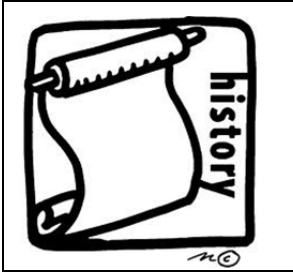
1. Working to quality practice in care settings
2. Working with service users in care settings
3. Behavioural awareness in care
4. Applied practical care in settings

Additional Information

The health and social care industry is far reaching. It is a sector that has huge influence on many in our society and it offers a broad range of career opportunities such as Registered Nursing, Health Care Assistants, and Social workers, Nursery Nurse, Play Leader, Community Worker and Health Visitor. Most students use the Level 2 course as a base for further study or progression onto Level 3 programmes in Health and Social Care and Early Years or the Diploma in Child Care and Education. You can work with young children, people with physical and/or learning difficulties, and the elderly and in a variety of environments e.g. residential homes, hospital, playgroups, schools. Alternative therapy, social care, physiotherapy, or child psychology. The great thing is that you can move up the career ladder and across different areas in a rewarding and challenging career.

For Further Information, please contact:

Mrs L Allen



History

Introduction

A Level History will allow you to study significant events, individuals and issues. You look at a range of historical perspective with a focus on continuity and change over time. The course allows you to develop and apply an outstanding of historical concepts.

Course Content

You will study four units throughout the A level course. Two in Year 12 and two in Year 13. We have a broad theme which threads through each of the courses tying them together. We focus on the shaping of the 20th Century in England, America between the wars and Russia and her Rulers. Peace and War offers an understanding of the causes and events leading up to the two World Wars which shaped the 20th Century. England and the New Century see the death of Edwardian England and the development of the embryonic Welfare state and the shaping of the politics of Britain during the century with the Rise of the Labour Party and the enfranchisement of women. America during the 20's and 30's helped shape the destiny of the international community both in terms of the global economy and the relationship between the international powers. Russia over a 100 year period developed as the second Super Power and adopted and developed a radically different political system.

Additional Information

History is a discipline which necessitates vital skills that many employers and universities value. Many students who study history go on to join esteemed professions such as the civil service, the law, business management and the media. This is because history equips students with many transferable skills that will be useful for any line of work. Amongst the transferable skills that you will develop are; analysis of a broad range of documents, the ability to prioritise and reason, the ability to formulate and sustain an argument and of course the ability to set up a research project.

For further Information, please contact:

Mr T Pearson



ICT- Level 3

Introduction

This is an exam-free, vocational related qualification. It aims to develop your knowledge and understanding of the ICT sector and the chosen specialist pathway if selected. It will develop your skills, knowledge and understanding in contexts that are directly relevant to employment situations, thereby enhancing your employability within the ICT sector. It will develop your ability to work autonomously and effectively in an ICT context. It will enable you to develop knowledge and understanding in specialist areas of ICT, and demonstrate the skills needed to participate in the operation and development of real ICT organisations. It will encourage progression by assisting in the development of skills, knowledge and understanding that you will need to access further or higher education programmes or occupational training on a full-time or part-time basis, or that you will need to enter employment or enhance their current employment status. It will promote interaction between employers, centres and you by relating teaching and assessment to real organisations.

Course Content

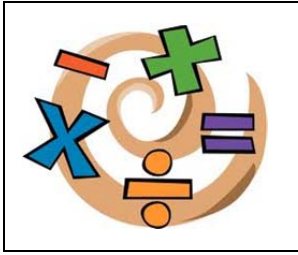
To achieve the Certificate (equivalent to one A level) you must complete six units, consisting of the four mandatory units listed below and a further two units chosen from the optional units. Only one of Units 8 or 9 may count towards a full qualification. The mandatory units are: Digital business communication, collaborative working, problem solving, creating a digital showcase. The optional units offered at Cromwell are advanced spread sheets and desk top publishing. There may be opportunities to specialise in your own areas of interest.

Additional Information

A candidate achieving an OCR Level 3 National Certificate in ICT may enter employment at operative level, e.g. office administrator; enter employment and undertake a related NVQ at a level appropriate to the job role, e.g. NVQ for IT Users/Practitions; enter employment and undertake other related ICT qualifications. OCR Level 3 qualifications can also open doors to Higher Education.

For Further Information, please contact:

Mr J Andrews or Mr C Robinson



Mathematics

Introduction

If you ever wondered where π came from, or what imaginary numbers are, or just, why the answer is always 2, then you will begin to understand why mathematics is an excellent choice as a subject in its own right. It will, however, also support your studies in other subjects as well as providing breadth and balance in arts or languages based programme. Geography, Psychology, the Biological and Social Sciences and computing depend a lot on using mathematical ideas and principles. In the long term mathematicians are very employable, not only in education and research, but also in careers in commerce and industry. As science and technology continue to become more complex, so the demand for mathematicians will continue to grow.

Course Contact

In Year 12 you will study AS Mathematics which will involve work on three separate Modules. These will be Core 1, Core 2 and Statistics. In Year 13, should you choose to move onto A2 Mathematics, you will again study three modules. These will be Core 3, Core 4 and Mechanics.

Additional Information

You could take this course with other advanced level courses to prepare for higher education in areas of Mathematics, related areas such as Engineering, Economics, Physics or more general higher education courses. With further training, you could go into a job related to Mathematics such as an Accountant, Engineer, Financial Adviser or Teacher. The course also helps you develop the skills, understanding and knowledge that many employers across lots of industries are looking for, especially in the economic and financial sectors.

For Further Information, please contact:

Mr J Parker



Product Design

Introduction

'A Level D&T: Product Design' offers learners the opportunity to study, design and make exciting prototype designs closely linked to the real world of product manufacture. This can be done in just one or in a combination of focus material areas. These include Graphic Products, Engineering, Resistant Materials or Electronics.

Course Content

Over the two years of the course there are four units of study and you will complete two of these each year. Here they are in order:

AS

Candidates study and work with a variety of materials and components used in the design and making of products. They work in both two and three dimensions. Candidates gain an understanding of industrial and commercial practices within the area of design and manufacture.

Unit 1 is titled 'Advanced Innovation Challenge' and requires candidates to design and model a product, within a time limit in a design workshop, as well as complete a workbook and question paper

Unit 2 is titled 'Product Study' and is the coursework part of AS. You'll work to develop a design using a range of materials and media.

A2

The specification offers candidates the opportunity to further develop their knowledge and practical skills from AS.

Candidates continue to design and manufacture products alongside developing an understanding of the processes and procedures of commercial manufacturing. Unit 3 is titled 'Design, Make and Evaluate'. Candidates are required to produce a coursework portfolio and product which fully demonstrates their designing, making and evaluation skills, using creativity, flair and innovation. Unit 4 is titled 'Product Design'. This examined unit is focused towards products and applications and their analysis in respect of:

- materials, components and their uses
- manufacturing processes
- industrial and commercial practices

Additional Information

Product Design could take you into a number of exciting career paths. Of course, being a product or industrial designer is a natural outcome but there are other job prospects like working as a furniture designer, interior designer or set designer. The advertising and marketing profession always needs creative people too, as does the manufacturing industry. You could also apply this A Level to your portfolio of skills as a teacher.

For Further Information, please contact

Mr D J King



Psychology

Introduction

Psychology is one of the most popular A levels in the country. It will appeal to students who have an interest in the mind and how it works. Psychologists attempt to describe and explain a variety of human behaviours and during the course you will be addressing questions such as: Can we rely on our memories? Why do we get stressed? Why do some people give in to peer pressure? What is normal/abnormal behaviour?

Course Content

The aim of the course is to study psychological theories, research, terminology, concepts, studies and methods. You will develop the skills of analysis, interpretation and evaluation and an understanding of different areas of psychology. Assignments will include a range of activities alongside note-taking, such as developing PowerPoint presentations, writing essays, carrying out web quests and taking part in discussions and debate. Assessment for AS is by three modular examinations. Assessment for A2 is by two modular examinations and one piece of coursework. Practising psychologists are invited in to contribute to relevant parts of the course, for example an educational psychologist talking about his work with children at risk. A visit to the science museum in London to look at the 'Who am I?' exhibition and complete the 'Psychology Trail'.

Additional Information

You could take this course with other advanced level courses such as a science or one of the humanities to prepare for higher education in Psychology or more general higher education courses. With further training, you could go into a job related to Psychology and people such as a Counsellor, Nurse or Psychologist. You could also specialise in a particular area of Psychology such as education or mental health depending on the area that interests you.

For Further Information, please contact:

Mrs R Tarrant



Public Services

Introduction

BTEC Level 3. This is a vocationally based qualification which is being offered at Cromwell from September 2011. The course is portfolio based and requires learners to compile portfolios of evidence to show understanding of a range of skills and competencies.

Course Content

Learners are required to complete work in four compulsory units and acquire credits to the necessary total from a range of optional units. Mandatory units are as follows:

- Government, Policies and the Public Services
- Leadership and Teamwork in the Public Services
- Citizenship, Diversity and the Public Services
- Understanding Discipline in the Uniformed Public Services

Optional Units will possibly include the following:

- Physical preparation, health and lifestyle in the Public Services
- Fitness testing and training for the Uniformed Public Services
- Understanding the impact of war, conflict and terrorism on Public Service
- Outdoor and Adventurous Expeditions
- Skills for Land Based Outdoor and Adventurous Expeditions
- Practical team sports
- Exercise, Health and Lifestyle
- Instructing Physical Activity and Exercise

Other units may be offered if learner demand and teaching expertise makes it appropriate. The qualification will be broadly equivalent to 2 GCE A-Levels. There are no final exams to sit as all work is presented, unit by unit in a portfolio.

Additional Information

The BTEC First Diploma in Public Services can be a stepping stone for successful candidates towards entering initial employment as, for example, a police community support officer, an army soldier or a Royal Air Force airman/woman. It can also lead to BTEC National Programme, or BTEC Higher National.

For Further Information, please contact:

Mr J Russell, Mr D Whitehead and Mr T Mills

Religious Studies



Introduction

Religious Studies gives you the opportunity to adopt an enquiry critical and reflective approach to the study of religious studies and Ethics. It is a challenging and thought provoking course which allows students to develop a wide array of vital skills.

Course Content

As/A Level Religious Studies is of interest to students wishing to build up on what they have learned at GCSE level. The course is of considerable value in its own right and may complement and balance choices in other subject areas. The OCR specification offers an academic approach to the study of religion and is accessible to candidates of any religious persuasion or none. The course encourages students to:

- Develop their interest in, and enthusiasm for, a rigorous study of religion and its relation to the wider world
- Treat the subject as an academic discipline by developing knowledge, understanding and skills appropriate to a specialist study of religion
- Adopt an enquiring, critical and reflective approach to the study of religion
- Reflect on and develop their own values, opinions and attitudes in the light of their learning

Philosophy of Religion at AS you will study Ancient Greek influences on philosophy of religion. The concept of god as a creator, the goodness of god, traditional arguments for the existence of God, the problem of evil, religion and science. At A2 Level you will study religious language, religious experience, miracles, the nature of God, life and death. Hinduism As – Origins of Hinduism, Core concepts i.e. monism, monotheism, polytheism, karma, moksha, samsara, Brahman, worship, Deities. AS Level – Key concepts of liberation, the Advaita Vedanta of Sankara, the importance of scriptures i.e. the Vedas, the Bhagavad Gita. Meditation and yoga. The religious thoughts and influence of Gandhi, Arya Samaj and Brahmo Samai. The development of Hinduism in the west.

Additional Information

You could take this course to complement other advanced level courses or to prepare for the A2 part of an Advanced GCE in Religious Studies, which could lead you onto higher education to study Theology or Religious Studies. With further training, you could go into a job related to Religious issues and Theology such as a Social Worker or Counsellor. You could also go straight into a job as the AS GCE is a recognised qualification that will help you develop the skills, understanding and knowledge that many employers across lots of industries are looking for, especially in sectors where people are the main focus.

For Further Information, please contact:

Mr E Adigun-Harris



BTEC Sports

Introduction

Tec Level 3 is a vocationally based qualification which is being offered at Cromwell from September 2012. Vocational qualifications are assessed by students building up a portfolio of evidence to demonstrate knowledge and understanding of a range of skills and competencies. The 120 Credit qualification is aimed at broadening and extending a specialist work related focus that prepare learners for employment in the appropriate vocational sector. It is suitable for those who have decided that they wish to enter a particular area of work. It is broadly equivalent to two GCE A Levels.

Course Content

Over the course of 2 years 120 credits are required to pass the course. Most units are worth 10 credits. Of the 120 credits 80 are compulsory units and the remaining 40 are optional units.

- * Principles of Anatomy and Physiology in Sport
- * The Physiology of Fitness
- * Assessing Risk in Sport
- * Fitness Training and Programming
- * Fitness Testing for Sport and Exercise
- * Sports Nutrition
- * Psychology for Sports Performance
- * Technical and Tactical Skills in Sport
- * The Athlete's Lifestyle

Optional units will be decided by the P.E department dependent upon resources and expertise of staff. Possible optional units may include:

- * Current Issues in sport
- * Sports Injuries
- * Analysis of sports performance
- * Research Investigation in Sport and Exercise Sciences.
- * Sports coaching
- * Practical Team Sports.

Additional Information

There is potential for the qualification to prepare learners for employment

In the appropriate vocational sector and it is suitable for those who have decided that they wish to enter a particular area of work. Some learners may wish to gain the qualification in order to enter a specialist area of employment or to progress to a higher education foundation degree, HND or other professional development programme. Other learners may want to extend the specialist nature of the subjects they studied on the BTEC Level 3 Diploma or another programme of study.

For Further Information, please contact:

Mr T Mills



sports studies

Introduction

This is a stimulating and challenging course. You may or may not have studied P.E. at GCSE before but many of the areas will be new and/or studied at much greater depth. All of you will however have had a range of sporting experiences and it is the intention of the course to draw on these experiences and relate them to the theoretical concepts and ideas contained in the syllabus. P.E. is a demanding and academic subject at Cromwell which will require hard work and commitment on your behalf to get the most from the course.

Course Content

You will learn in AS:

Anatomy and Physiology

Acquiring Movement Skills

Socio-Cultural Studies relating to participation in physical activity

Acquiring, developing and evaluating practical skills in Physical Education

And in A2:

Historical Studies

Sports psychology

Exercise and Sport Physiology

The Improvement of effective performance and the critical evaluation of practical activities in Physical Education

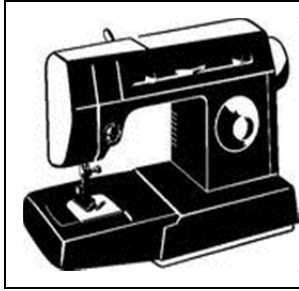
Practical Skills

Additional Information

You could take this course to complement other advanced level courses such as Science or to prepare for the A2 part of an Advanced GCE in Physical Education, which could lead onto higher education in areas of Sport Studies, Recreation, Exercise and Science or more general higher education courses. With further training you could go into a job related to Physical Education such as a Physiotherapist, Teacher or Exercise and Fitness Trainer. You could also go straight into a job as the AS GCE is a recognised qualification that will help you develop the skills, understanding and knowledge that many employers across lots of industries are looking for, especially in the Sporting and Health Sectors.

For Further Information, please contact:

Mrs Oldfield



Textiles

Introduction

'A Level Art and Design: Textiles gives candidates a rounded exposure to different aspects of textile design, allowing them to display their abilities in a variety of disciplines and demonstrate their understanding of these contexts. The emphasis is on showing creativity and design and artistic flair to produce exciting and stimulating outcomes.

Course Content

Over the two years of your A Level course there are four units of study and you will complete two of these each year. Here they are in order:

AS

Unit 1 is titled 'Coursework Portfolio'. Candidates produce a portfolio of work from starting points, topics or themes determined in school. The focus is on including work that shows exploration and research as well as the acquisition of textiles techniques and skills. Unit 2 is titled 'Controlled Assignment 1' and requires an outcome to be realised in a set time based on a theme.

A2

The specification offers candidates the opportunity to further develop their knowledge and practical skills from AS. Unit 3 is titled 'Personal Investigation' and is a major coursework project based on the interests of the candidate which have a personal significance. It includes a written personal study. Unit 4, 'Controlled Assignment 2' requires a similar response as the AS unit only with more depth.

Additional Information

Textiles could take you into a number of exciting career paths. Of course, being a textile designer or artist or fashion designer are natural outcomes but there are other job prospects like working as an interior designer or in fashion merchandising and buying. The advertising and marketing profession always needs creative people too, as does the manufacturing industry. You could also apply this A Level to your portfolio of skills as a teacher.

For Further Information, please contact:

Mrs S Fraser and Mr D J King